



Safeguarding, Health & Safety Consultants Ltd.

# The Safety Scene

www.kymallanhsc.co.uk

Making Sense of Safeguarding

ISSUE 23



## THIS ISSUE:

- In Court
- County Lines trafficking
- 3D Printer concerns
- Primary school swimming

## Welcome to the Safety Scene Spring 2019...

It's that time again where you are all planning for this year's adventures. As always, the Spring term sees you all planning for your educational visits – for those of you who use the KAHSC online visits system we would like to remind you of the need to submit your visits for approval advice at least 4 weeks before departure in order for you to get the best out of the service that we provide. We will always endeavour to ensure that approval advice is given prior to a visit, but with the vast number of visits submitted during the

Summer term, unless they are submitted on time we cannot guarantee this. If you know the visit is going to be late, please call ahead and we will make every effort to accommodate your requests.

The UK exit of the EU has been the predominant topic for a little while now and at the time of writing a no deal scenario on 29 March 2019 appears possible. In recognition of this, the Department for Education have published guidance which will allow Governors and Senior Leaders to begin preparations for

how this may affect educational settings. We have summarised the main points inside and further details are available to download from the KAHSC website and GOV.UK. As soon as we are made aware of the exact changes coming into force, we will update you and get to work updating our model policies/procedures and Single Central Record where necessary.

As always if you have any questions about the above, where we can, we are more than happy to help.

## New Model Off-Site Visits Procedures (Aided, Foundation & Academies)

Part policy, part staff handbook, and entirely centred around the Outdoor Education Advisers' Panel's National Guidance, check out our new model Off-Site Visits Procedures which can be adopted by Aided and Foundation Schools and Academies. By requiring staff to use the procedures while online, senior leaders can

reduce distribution costs and will always know their staff are basing their activities on the very latest in best practice. Community and Controlled Schools are advised to follow the guidance issued by their employer, the County Council.

## In Court

### Mother found guilty of genital mutilation of daughter

In a landmark case, a woman who mutilated her three year old daughter has become the first person in the UK to be found guilty of female genital mutilation (FGM). The child's genitals were altered at home, but the mother was forced to take her to hospital due to excessive bleeding, claiming that she fell on metal while climbing to get a biscuit.

On searching the parent's property, police found evidence of 'witchcraft' including various spells

aimed to prevent those involved in the investigation from speaking of their findings.

The woman who cannot be identified for legal reasons denied FGM and her husband denied the charge of failing to protect the child from risk of genital mutilation. The woman was remanded in custody to be sentenced in March 2019.

This case is only the fourth brought to court in the UK despite FGM

being illegal since 1985. The other 3 cases led to acquittals. Female genital mutilation for non-medical reasons carries a sentence of up to 14 years in jail.



### Local authority awards compensation to parents of sexually abused girl

The parents of a six year old girl have won a five figure compensation settlement from a local authority for failing to protect their child at school. The girl was repeatedly sexually assaulted by two boys at her primary school and only disclosed the abuse to her mother when she could no longer sit at the breakfast table because of genital pain.

It was found that the child was assaulted almost daily at school and two staff members had previously witnessed inappropriate sexual behaviour towards her in the playground. One member of staff found the girl

with her underwear partially removed and one of the boys behind her but did not escalate the incident.

The local authority responsible for the school agreed to a financial settlement after her parents argued that the school had been negligent by failing to safeguard the six year old and failing to adequately train their staff.

The payment will be used to fund private counselling after the family were told that their daughter did not meet the criteria for assessment as a child in need.

### Council fined after school minibus death

A council has been fined £300,000 after admitting a health and safety failing that resulted in the death of a 15 year old boy on school premises. The boy was running to catch his bus at the end of the school day when he was struck by a school minibus being driven by a member of staff. Another boy was also injured but survived.

Investigations found that there had been a number of near misses over the years and concerns that were raised over drop-off points, walkways and road parking had

been ignored. One bus driver described the end of the day as a 'free for all'. During the planning of the site insufficient attention was paid to the movement of pupils at the end of the day resulting in them having to walk in between parked buses and into the road to get their bus.

This case highlights the need for schools to try, where reasonably practicable, to separate pedestrians from vehicles. Risk assessments should be reviewed regularly to take into account any 'near

misses'/incidents reported and when circumstances change.



## County Lines drug trafficking

Nationally, County Lines drug trafficking is becoming an increasing problem. In recent months Cumbria has seen a number of court cases resulting in charges for drug related offences being given.

Whilst pupils are at risk from being targeted by criminal gangs, it should be remembered that adults too can be recruited by such organisations. History teacher, Angela Davey who is currently awaiting sentencing after being arrested for drug

trafficking, went from a respected Secondary School teacher to County Lines 'branch manager' in the space of 18 months following the breakdown of her marriage.

It is important that everyone is vigilant and report anything that they believe indicates that someone is being exploited by criminal gangs.

### Indicators include:

- Changes in behaviour
- Signs of assault and/or malnutrition

- Access to numerous phones
- Use of unusual terms
- Associating with gangs
- Unexplained bus or train tickets
- School truancy or going missing
- Unexplained gifts (clothes, trainers) and cash

Home Office guidance Criminal Exploitation of Children and Vulnerable Adults: County Lines is available to download from the KAHSC website.

## Youth Mental Health First Aid

The Emotional Wellbeing and Mental Health Partnership has invested in the roll out of Youth Mental Health First Aid Training (YMHFA) and this includes schools who can access the 2 day YMHFA course.

Go to: <http://www.cumbrialscb.com/training/youthmentalhealthfirstaid.asp> and further information about the YMHFA - 1 day course in schools can be found at: <https://mhfaengland.org/mhfa-centre/schools-programme/>

## A third of secondary schools pupils are suffering mental health issues

A study by Action for Children has revealed that a third of 15 – 18 year olds are suffering from mental health and emotional wellbeing issues. The study found that the most common issues included feeling depressed, restless sleep, struggling to focus, inability to shake negative feelings and everything feeling 'an effort'.

Those who participated in the study were offered a place in the 'Blues

Programme', developed as part of the charity's 'Build Sound Minds' campaign and is funded by Royal Mail. The campaigns aim is to encourage positive conversation and good mental health. Pupils who have attended the programme showed a decrease in depression and increased confidence and self-esteem.

To find out more visit: [https://www.actionforchildren.org.uk/what-](https://www.actionforchildren.org.uk/what-we-do/children-young-people/blues-programme/)

[we-do/children-young-people/blues-programme/](https://www.actionforchildren.org.uk/what-we-do/children-young-people/blues-programme/) and <https://www.buildsoundminds.org.uk/>.



## Schools to take part in mental health trials

To mark Children's Mental Health Week which took place 4 – 10 February the Education Secretary announced that up to 370 schools in England will take part in a series of trials testing different approaches to supporting young people's mental health.

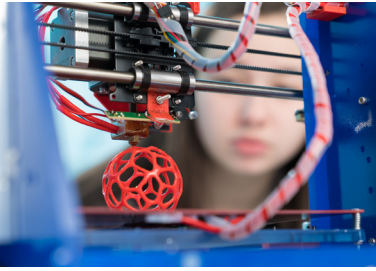
The trials which will run until 2021 will include a range of mindful exercises, relaxation techniques and breathing exercises alongside pupil sessions

with mental health experts. 5 different approaches will be assessed to determine which has the greater impact on improving young people's mental wellbeing.

The trials build on the Government's wider investment in supporting children's mental health in schools to ensure that every young person is given the tools to thrive despite challenges they may face growing up.



## Concerns raised over 3D printers



In a recent safety bulletin the HSE have raised concerns over the use of some types of 3D printers. The printers deposit polymer filaments through a heated nozzle to create three dimensional objects. Desktop versions of the printers are generally unenclosed and concerns are that those individuals working in the area of use are being exposed to harmful fumes and particles.

The HSE have conducted research and have found that exposure can be significantly reduced by:

- setting a lower printer nozzle temperature;
- using a filaments with a lower emission rate;
- placing the printer in an enclosure fitted with a particulate filter and extraction.

The research forms the basis for CLEAPSS Guide G276 '3D printing in schools and colleges – managing the risks' available from the CLEAPSS website and is a must read for those schools with an unenclosed 3D printer.

## HSE reinforce call for management of buildings containing RAAC

The HSE is reinforcing its call for proportionate management arrangements for buildings containing reinforced autoclaved aerated concrete (RAAC).

RAAC precast flooring and roof components were used in the construction of many buildings including schools between the mid-1950s and the 1980s. Recent investigations have found that initial tests that suggested that

components would give adequate warning through visual deterioration, may in fact be wrong and components can fail in as short a time as 48 hours from cracks appearing.

The Local Government Association has produced information about RAAC identifying steps that bodies responsible for schools should take including considering the replacing of any roofs still in existence.

Relevant buildings should be regularly inspected, checking for any visual cracks. If cracks or any signs of deterioration are detected staff must report this immediately to the Head Teacher with areas closed off pending further investigation.

Further information regarding the steps to take can be found at <https://local.gov.uk/information-reinforced-autoclaved-aerated-concrete-raac>

## PRODUCT RECALL: Arjo Minstrel Floor Lift

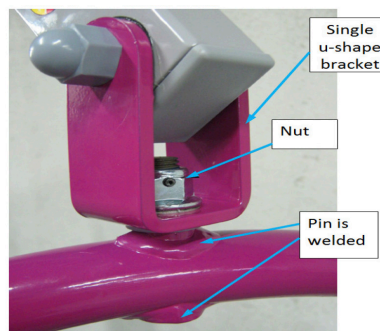
**Issue:** Spreader bar may detach from lift arm.

**Models affected:** Serial numbers MPLT0801A3116 to MN1000G256 (full list alerted to KAHSC subscribing schools 31 January 2019).

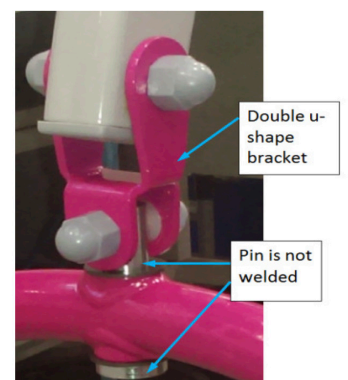
**What to do:** Check your spreader bar against the pictures to the right. If incorrect (picture 1) take the device out of use immediately and contact Arjo telephone: 01452 428315 or visit: [UKSSUComplaintHandling@arjo.com](mailto:UKSSUComplaintHandling@arjo.com).

If correct (picture 2) you can continue to use the device. In both cases you are advised to complete an Arjo Customer Response available in the 'Product Recall' section of the KAHSC website.

PICTURE 1: INCORRECT



PICTURE 2: CORRECT



## Single Central Record check



If you are expecting a visit from Ofsted imminently or are in the 'window' for a visit, please call us if you would like your Single Central Record checked for compliance.

## Brexit – what a no deal scenario means for schools

# BREXIT

In preparation for a 'no deal' scenario when the UK leaves the EU on 29 March GOV.UK have begun to publish guidance relating to some of the changes that may come into place and how they will affect schools.

## Recognition of teaching qualifications

Currently there is a reciprocal recognition of professional qualifications between the UK and the EU, in a no deal scenario

this will no longer apply. This does not affect those who have already had their teaching qualifications recognised or have applied before

29 March. For those applying after 29 March the Government aims to have a new system in place by which they can gain recognition.

## Checking for EEA sanctions or restrictions

Currently those appointing new members of teaching staff are required to check the Teaching Regulation Agency database to ensure that those who have lived or worked outside of the UK for 3 months or more in the last 5 years do not have any sanctions/restrictions imposed on them by any European Economic Area

(EEA) member states. On leaving the EU this requirement will no longer apply and the Teaching Regulation Agency will no longer maintain this information. 'Keeping Children Safe in Education' is due to be updated to advise schools about how this check will be carried out in the future.

## Education visits – travelling to the EU



If there is no EU Exit deal schools will need to take action before travelling to EU destinations. There are a number of issues that you will need to be aware of before planning to travel.

- Passports – if the passport has less than six month validity remaining on the date of travel, it will need to be renewed in advance.

- Health cover – those intending to travel in the EEA should apply for a free European Health Insurance Card (EHIC) which will give the right to access state-provided healthcare during temporary stays in those countries. This is not an alternative to travel insurance.
- Travel insurance – ensure that you are aware of the terms and conditions of your policy. Existing policy holders will be informed by their Insurance companies of any changes made as a result of the EU exit. It is important to ensure that policies cover health and medical emergencies that occur including treatment costs, hospital charges, ambulance fees and return flight arrangements if you cannot use your original ticket.

## Data Protection

In the event that the UK leaves the EU without a deal, UK organisations will need to ensure that they continue to be compliant with data protection law. As schools operate only

within the UK there will be no immediate changes required to how they work. If and when changes are needed information will be issued by the IOC and on GOV.UK

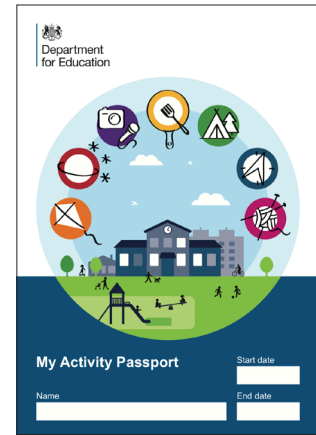


## DfE publish new 'My Activity Passport'

On a visit to St Werburgh's Primary School earlier this year, the Education Secretary, Damian Hinds, said that he was particularly struck by their activity passport, which was inspired by the National Trust's '50 things to do before you're 11¾' list. As a result his Department has created the

"My activity passport", with the help of the Council for Learning Outside the Classroom and others.

You can access the templates and guidance at: <https://www.gov.uk/government/publications/my-activity-passport>



## Life-saving skills to be taught in all schools

The DfE has announced that life-saving skills and first aid including CPR will be taught in all schools in England under plans for health education to become compulsory from 2020.

The proposal forms part of the strengthening of Health, Sex and Relationships education and will see pupils taught how to administer CPR, the purpose of defibrillators and basic treatments for common injuries.

There are 30,000 cardiac arrests every year and survival rates from cardiac arrest are becoming lower, perhaps because many adults aren't able, confident or willing to help in an emergency. Every minute without life-saving treatment reduces chances of survival by 10%. It is vital that we teach the next generation how to administer life-saving treatment.

Schools will be encouraged and supported to teach high-quality relationships education, RSE and health education – tailored to meet their pupils' needs – from September 2019, ahead of it becoming compulsory in September 2020.



## CCC Early Help & Targeted Youth Support

Cumbria County Council's Early Help and Targeted Youth Support can offer a range of group work interventions for children in school years 7-13 (Key Stages 3, 4 and 5).

Sessions can be delivered to large and small groups and can be adapted to fit in with individual needs covering the following areas:

- Risk and safety awareness
- Friends and relationships
- Feelings and behaviour
- Confidence and self esteem
- Youth participation
- Fire safety
- Offending behaviour and consequences - i.e. criminal records
- Anti-social behaviour and impact on others
- Internet safety
- Inappropriate use of social media
- Child Sexual Exploitation (CSE)
- Youth homelessness awareness/prevention
- Supported sessions using digital badges (accessible online)

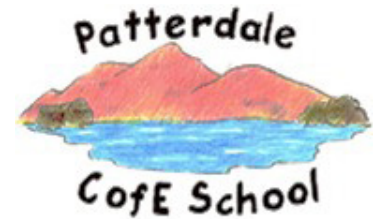
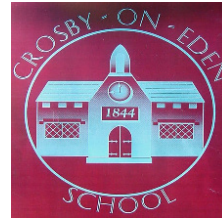
resources on a range of topics) such as budgeting at different levels; homeless awareness/prevention; positive relationships and post-16 options (to include working for success)

Schools can now access this support by completing the Schools Offer Request Form at <https://www.cumbria.gov.uk/childrens-services/schoolsandlearning/schooloffer/schooloffer.asp>.



## Star Performers

In this issue we would like to say a huge congratulations to **Patterdale CE School** and **Crosby on Eden CE Primary School** who both achieved very impressive scores in their recent Health and Safety audits carried out by KAHSC. Well done to all involved, all of your hard work has paid off.



## New Online Safeguarding 16 – 25 year olds course

### NSPCC Learning

A new NSPCC online Safeguarding course aims to provide those who

work with 16 to 25 year olds with the skills and understanding to enable them to protect and safeguard young people.

The course is available at: <https://learning.nspcc.org.uk/training/introductory/safeguarding-16-25-year-olds-online-course/>

## Drive to ensure all children can swim by the end of primary school

A partnership between Swim England, the DfE and Department for Digital, Culture Media and Sport has resulted in an agreement that all primary schools will receive extra support to help ensure that all children can swim confidently and know how to stay safe in and around water.

The £320 million PE and Sport Premium will be used for:

- Extra lessons for children who have yet to reach the national curriculum expectations
- Extra training for teachers on water safety and swimming techniques
- Extra guidance to help schools deliver safe, fun and effective swimming lessons
- Boosting partnerships with independent schools to offer the use of facilities, coaching and other support to schools in their area.

The measures follow government-backed reviews that found that swimming standards varied in schools despite being part of the curriculum and form part of the governments school sport and activity plan to ensure that all children have access to quality PE and sport sessions during the school week and opportunities to be physically active throughout the school.

Guidance will be available from Swim England in Spring 2019.



## Primary PE and Sport Premium reporting

Maintained schools must publish on their websites information about the effective and sustainable use of Primary PE and Sport Premium funding. Schools must include the amount of Premium received, a full breakdown of how it was spent (or will be spent), what impact the school has seen and how the

improvements will be sustainable in the future. Swimming data in relation to the year 6 cohort must also be provided.

Following recent changes to the Primary PE and Sport Premium Guidance the deadline for reporting this information is now by **31 July 2019** at the latest.

The Association for Physical Education (afPE) and Youth Sport Trust have created a template to make reporting this information easier. The template is available from the afPE website [www.afpe.org.uk/physical-education/evidencing-the-impact-guidance-template](http://www.afpe.org.uk/physical-education/evidencing-the-impact-guidance-template).

## Safeguarding (Health & Safety) for Head Teachers

Full Day 9.30am – 4.30pm

Non-subscribers: £150.00 + VAT per person    KAHSC Subscribers: £130.00 + VAT per person

Tues 26 March 2019    North Cumbria (venue tbc)

Wed 27 March 2019    South Cumbria (venue tbc)

**Please note:** this session is designed to support Head Teachers with an overview of their day-to-day health & safety responsibilities. For a more in depth course we would recommend the 2 day IOSH Safety & Health Management in Education.

## Safer Recruitment

Full Day 9.30am – 4.30pm

Non-subscribers: £150.00 + VAT per person    KAHSC Subscribers: £130.00 + VAT per person

Tues 30 April 2019    South Cumbria (venue tbc)

Wed 8 May 2019    North Cumbria (venue tbc)

## Asbestos Awareness

Half Day

Non-subscribers: £100.00 + VAT per person    KAHSC Subscribers: £85.00 + VAT per person

Wed 8 May 2019 1.30pm – 4.30pm    South Cumbria (venue tbc)

Thurs 9 May 2019 9.00am – 12.00pm    Carlisle Area (venue tbc)

Thurs 9 May 2019 1.30pm – 4.30pm    West Cumbria (venue tbc)

## Fire Warden

Half Day

Non-subscribers: £100.00 + VAT per person    KAHSC Subscribers: £85.00 + VAT per person

Tues 21 May 2019 1.30pm – 4.30pm    South Cumbria (venue tbc)

Wed 22 May 2019 9.00am – 12.00pm    Carlisle Area (venue tbc)

Wed 22 May 2019 1.30pm – 4.30pm    West Cumbria (venue tbc)

## Legionella Awareness

2 Hours

Non-subscribers: £80.00 + VAT per person    KAHSC Subscribers: £65.00 + VAT per person

Thurs 6 June 2019 1.30pm – 3.30pm    South Cumbria (venue tbc)

Wed 12 June 2019 9.30am – 11.30am    Carlisle Area (venue tbc)

Wed 12 June 2019 1.30pm – 3.30pm    West Cumbria (venue tbc)